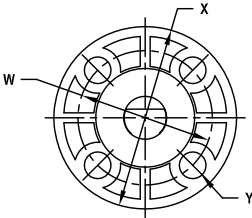
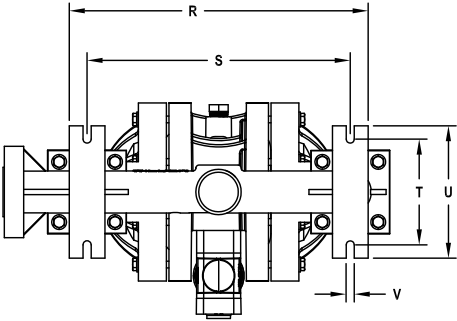
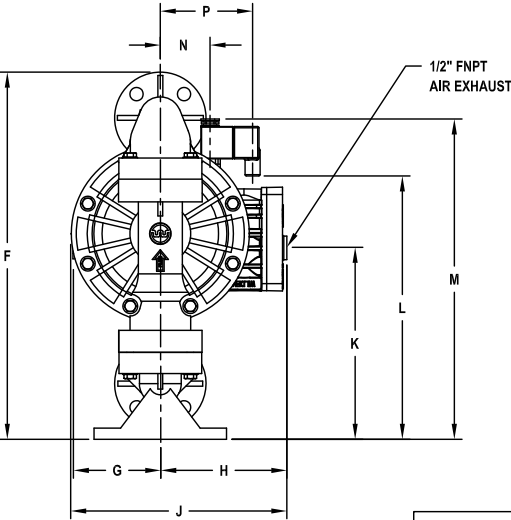
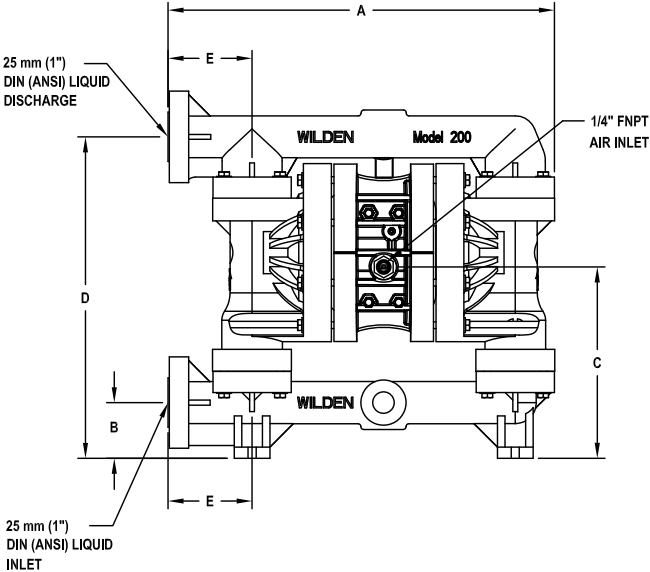


- NOTES: UNLESS OTHERWISE SPECIFIED
1. DIMENSIONS AND TOLERANCES PER ANSI Y14.5M-1982.
 2. * INDICATES DIMENSIONS AND/OR FEATURES MODIFIED ON CURRENT REVISION LEVEL.

REV.	DESCRIPTION	BY	CHK.	APP.	DATE
A	RELEASED INTO PRODUCTION SEE ECN #06086	-	-	-	-



DIMENSIONS - A200P ADVANCED™ PLASTIC

ITEM	METRIC (mm)	STANDARD (inch)
A	457	18.0
B	66	2.6
C	226	8.9
D	381	15.0
E	99	3.9
F	434	17.1
G	104	4.1
H	150	5.9
J	257	10.1
K	226	8.9
L	310	12.2
M	378	14.9
N	58	2.3
P	109	4.3
R	353	13.9
S	310	12.2
T	124	4.9
U	157	6.2
V	10	0.4
	DIN (mm)	ANSI (inch)
W	85 DIA.	3.1 DIA.
X	115 DIA.	4.3 DIA.
Y	14 DIA.	0.6 DIA.

LW0412 REV. A

DO NOT SCALE DRAWING UNLESS OTHERWISE SPECIFIED DIMENSIONS ARE IN INCHES TOLERANCES ARE:			
DECIMALS	.XX	±	-
ANGLES	±	-	-
SCALE	4/1	SHEET	1 OF 1



22009 VAN BUREN STREET
GRAND TERRACE, CA 92113-5607
(909) 422-1700
WWW.WILDENPUMP.COM

TITLE A200P ACCU-FLO PLASTIC DIMENSIONAL DRAWING			
DRAWN BY	N. HALE	DATE	10/12/17
CHECKED BY	Aida Beltran	DATE	10/12/17
APPROVED BY	Leonard Galvan	DATE	10/12/17
ASSY. NO.		DRAWING NO.	LW0412
REV.			

THIS DOCUMENT AND ITS CONTENTS ARE PROPRIETARY TO
WILDEN PUMP AND ENGINEERING CO. ANY REPRODUCTION,
DISCLOSURE OR USE OF THIS DOCUMENT IS EXPRESSLY
PROHIBITED EXCEPT AS OTHERWISE AGREED TO IN WRITING.